



The Saudi Fund for Development



The Activity of the Saudi Fund for Development in
Supporting Social Development Sector

2014



الصندوق السعودي للتنمية
The Saudi Fund For Development

P. O. Box: 50483 Riyadh 11523 Saudi Arabia
Tel: +966 11 279 4000 | Fax: +966 11 464 7450

www.sfd.gov.sa

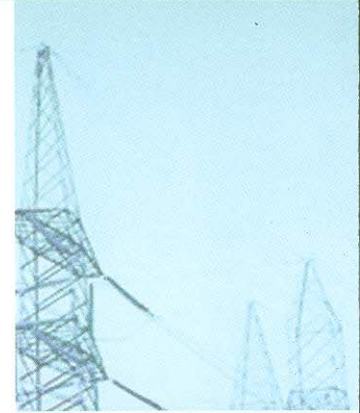
**The Activity of the Saudi Fund for Development in
Supporting Social Development Sector**

The Saudi Fund For Development
الصندوق السعودي للتنمية





The Saudi government incepted the Saudi Fund for Development in order to entrust it with the implementation of its policy which aims to help the developing countries to accomplish their economic plans and programs. This in turn enhances the economic growth of those countries and achieves urban prosperity to eventually reach a comprehensive and balanced development. Accordingly, the Fund has always keened on dedicating part of its contributions to finance a number of social and economic projects and programs in the developing countries, the projects ranged to include the construction of energy, roads, dams, water and sewerage, housing, social and administrative buildings, and communication projects that extend in and outside the cities. Since its inception in 1975 up till the end of 2013, the Fund has contributed to finance 285 projects and programs in the field of social development - 163 in Africa, 113 in Asia and 9 in Other Regions. The total assistance provided by the Fund to these projects amounted to about SR. 25997.82 million, equivalent to US\$ 6932.75 million.





The following is a brief summary of the Fund contributions in the sector of Social Development :

First - Energy Projects :

Energy represents an integral part of any civilized society. Besides being crucially important for everyday life, energy is an essential ingredient in the entire social and economic sectors. In light of the utmost importance of the energy projects, the Fund has contributed SR. 8967.85 million for financing 61 development projects in the developing countries.

Second - Road Projects :

Roads are definitely one of the social infrastructure key essentials. They are the means by which the requirements for urban, economic and social development flow. They also connect the country ends thus facilitate the transport of people and goods. Accordingly, most of the developing countries governments keened on supporting the road sector projects in light of their urge to develop their countries socially, economically and intellectually. By implementing road projects, governments seek to offer sophisticated transport services, provide the local markets with the basic commodities, improve the level of communication between the urban and rural areas and also enhance the investment environment. Thus the Fund contributed SR. 8054.27 million for financing 125 road projects.





Third - Dams Projects :

Most of the developing countries governments keen on the establishment of dams as they contribute to the expansion of agricultural lands, thus increase the agricultural production and provide the residents with the necessary food items and commodities. Given the importance of the stated projects in the accomplishment of food security, the Fund has participated in financing 32 dam projects with a total amount of SR. 4070.83 million.

Fourth - Water and Sewerage Projects :

Governments of the developing countries give utmost priority to the provision of clean potable water along with sophisticated sewerage systems. This consequently ensures a safe and healthy environment that helps curb the wide-spreading of infectious diseases. Therefore, the Fund contributed SR. 2939.51 million for financing 40 water and sewerage projects.

Fifth - Housing and Social and Administrative Buildings :

Adequate housing is one of life essentials, and is fundamental for the establishment of civilization and social progress. Most of the developing countries, governments believe in the significance of these projects and how they help elevate the standard of living, reduce the poverty rate and curb the wide-spreading of slums.





Thus the mentioned governments gave great importance to the provision of suitable housing for its limited-income citizens. As the Fund endeavors to help the developing countries implement housing projects for the low-income citizens, it contributed SR. 1688.74 million for financing 21 projects in the housing sector.

In response to the needs of developing countries for financing in order to establish the necessary social and administrative buildings - ones which positively impact the society through the services they offer to the citizens - the Fund has participated in financing a number of social and administrative building projects. The Fund's contribution in this regard was represented in the construction of some facilities related to the governmental and social institutions. It financed 5 projects with SR. 187.29 million, in addition to finance a number of development projects including the construction of a group of social and administrative buildings.

Sixth - Communication Projects :

Nowadays, communication technology stands as an essential requirement for a social and economic comprehensive development. The Fund has contributed SR. 276.62 million for financing 6 projects in the communication sector based on its awareness of the vital role that such projects play, and how they achieve social and cultural integration between the different regions.



The Contributions of the SFD's in Supporting the Social Development Projects during the Period 1975 - 2013

(SR. Million)

Sector	Geographical Distribution of Loans						Total no. of Projects	Total Amount
	Africa		Asia		Other Regions			
	No. of Projects	Amount	No. of Projects	Amount	No. of Projects	Amount		
Energy	23	2930.98	37	5925.81	1	111.06	61	8967.85
Roads	75	3665.73	46	4172.39	4	216.15	125	8054.27
Dams	26	3681.44	6	389.39			32	4070.83
Water and Sewerage	23	1848.33	14	921.68	3	169.50	40	2939.51
Housing and Social and Administrative Buildings	12	1207.62	8	413.62	1	67.50	21	1688.74
Communication	4	142.69	2	133.93			6	276.62
Total	163	13476.79	113	11956.82	9	564.21	285	25997.82